

# ORION™

Sub-Ohm ATOMIZER



## User Guide

Thank you for choosing the Smart Smoke ORION™ Sub-Ohm TC Atomizer! Please read entire user guide before using this product.

### Product Introduction

The ORION™ is built with the highest quality standards in mind. Constructed out of copper electroplated chrome and heat resistant glass, the ORION™ offers a superior sub-ohm temperature control experience. Only natural cotton is used for the purest flavors and best saturation. Featuring adjustable airflow control settings to customize the draw to your liking.

### Technical Specifications

**Material:** Copper Electroplated Chrome

**Coil Design:** Single Design

**Capacity:** 3.0mL

**Ohms Rating:** Ni 0.15 ohms w/Temperature Control

**Thread Pattern:** 510 Thread

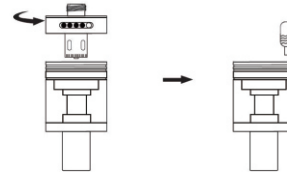
**Recommended Power Range:** 30-40W

### Contents

- 1 - ORION™ Atomizer (reservoir)
- 1 - ORION™ Mouthpiece (removable)
- 1 - ORION™ Atomizer Base
- 2 - ORION™ SmartCoils™ (Ni 0.15ohms TC)

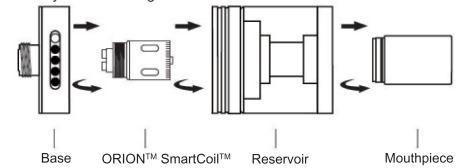
### How to fill your ORION™

Simply detach the base of the ORION™ atomizer while holding upside down. Refill reservoir with SmartNic™ e-liquid. Do not allow any liquid to enter the center tube. Only fill approximately 75% of the reservoir to avoid leakage. Re-attach base of the atomizer securely. Allow liquid to saturate into the SmartCoil™ for a minimum of 5 minutes before activating the atomizer. Failure to do so may result in damage to the SmartCoil™.



### How to Replace the SmartCoil™

Simply detach the base of the ORION™ atomizer while holding upside down. Detach the SmartCoil™ from the base by twisting counter-clockwise. Dispose of used SmartCoil™ and replace with new ORION™ SmartCoil™. Allow liquid to saturate into the SmartCoil™ for a minimum of 5 minutes before activating the atomizer. Failure to do so may result in damage to the SmartCoil™.



### Adjust Airflow Settings

Simply rotate the regulation ring on the atomizer base to adjust airflow as necessary.

### Warnings

Never attempt to repair the ORION™ yourself. Damage or personal injury could occur.  
Do not leave ORION™ in extreme heat or cold (32 °F Min - 113 °F Max)  
Do not leave the ORION™ in damp or wet conditions as damage may occur.  
The use of non-Smart Smoke products with the ORION™ may result in damage.

### Warranty

Please visit [www.smartsmoke.com](http://www.smartsmoke.com) for complete warranty information, disclosures, and limitations.

© 2015 Smart Smoke, Inc. All rights reserved.

The ORION™ and Smart Smoke® Logo are trademarks of Smart Smoke, Inc.  
[info@smartsmoke.com](mailto:info@smartsmoke.com)    [www.smartsmoke.com](http://www.smartsmoke.com)    1-888-356-4654

If you are not satisfied with this product for any reason, please contact us.

